



Marie Skłodowska-Curie Actions Postdoctoral Fellowships (HE 3rd call)



Maria Carvalho Dias
European Research Agency (REA)
27 April 2023

Postdoctoral Fellowships (PF): Objectives

- Foster excellence through the implementation of a research project;
 - Enhance the creative and innovative potential of researchers holding a PhD (training on transferable skills & career development);
 - Focus on i3 (international, inter-sectoral, interdisciplinary) mobility;
 - Bridges with and exposure to the non-academic sector.
- All scientific fields (including Euratom-related areas)

Postdoctoral Fellowships (PF): Types of Action

PF is a mono-beneficiary action to support post-doctoral research and careers and has the following options:

- ✓ **European Postdoctoral Fellowships** coming to Europe from any country in the world or moving within Europe;
- ✓ **Global Postdoctoral Fellowships** outside EU Member States and Horizon Europe AC.

Postdoctoral Fellowships (PF): Participation

Participating organisations*

- Legal entity in an EU Member State or HE Associated country**

Researchers:

- in possession of PhD at the call deadline (successful defense before call deadline);
- up to 8 years research experience after PhD (exceptions: career breaks, work outside research, research outside Europe for reintegrating researchers,...)
- **Nationality:**
 - **EFs:** any nationality
 - **GFs:** nationals or long-term residents of MS or HE AC (see definition ;
- **Mobility rule:** not resided/had main activity in the country of
 - **EFs** the beneficiary
 - **GFs** host organisation for more than 12 months in the 36 months before call deadline

**Specific eligibility criteria for PFs (including EURATOM):*

Organisation: legal entity established in an EU Member State or Euratom AC + Researcher: nationals or long-term residents of an EU Member State or a Euratom AC

***HE Associated countries: Albania, Armenia, Bosnia and Herzegovina, Faroe Islands, Georgia, Iceland, Israel, Kosovo, Moldova, Montenegro, North Macedonia, Norway, Serbia, Tunisia, Turkey, Ukraine. Note: Ongoing negotiations with the UK*

Postdoctoral Fellowships (PF): Conditions

Duration

- **EFs:** 12-24 months;
- **GFs:** 24-36 months (12-24 outgoing phase + 12 months mandatory return)

Secondments (non compulsory) Worldwide

- **EFs:** not more than 1/3 of total of project
 - **GFs:** not more than 1/3 of total of outgoing phase + a max 3 months at beginning of the project at the beneficiary (to be deducted from the outgoing phase)
- Note:** encoded in Part A (Call specific questions)

Non academic placement (NAP) (non compulsory) EU MS or HE AC

- Additional period of max 6 months after project completion
- Note:** encoded in part A as participant organisation

	Secondment		Non-academic placement
Maximum Duration	<i>EF:</i> Up to 1/3 of the requested project duration (excluding any period for non-academic placement)	<i>GF:</i> Up to 1/3 of the duration of the outgoing phase	 Up to 6 months duration
Timing	<i>EF:</i> At any time during the requested project duration	<i>GF:</i> <ul style="list-style-type: none">- A maximum of three months can be spent at the start of the project at the beneficiary (or associated partners linked to the beneficiary)- This period of three months will be considered as part of the outgoing phase- Secondments cannot take place during the mandatory twelve-month return period to the host organization in EU MS/AC	Additional period after the requested duration of the fellowship
	Can be divided in several smaller periods		
Mobility	Any country <i>worldwide</i>		EU MS or HE AC
Sector	Any sector		Non-academic sector only
Encoding in part A	NO. Do not encode the secondment organisations as a participating organisation		YES. The organization hosting the placement MUST be encoded as a participating organisation
Description in part B1	YES. Its relevance and quality will be assessed by the evaluators.		YES. Its relevance and quality will be assessed by the evaluators.
Supporting Doc in part B2	None.		None. No letter of commitment is required.



ERA Fellowships (widening activities)

- No separate application or evaluation – integral part of the MSCA Postdoctoral Fellowships call application form;
- For specific countries with specific R&I performance – available in Work Programme;
- Must be submitted by a host institution from a ‘Widening’ country;
- Only for EFs, GFs don’t qualify;
- Only proposals scoring over 70% in the PF call will be considered which failed to reach an adequate place in the ranking to be funded under that call;
- Timing aligned with PF call.

NOTE: “call specific question” to be completed in the PF submission for EF to indicate willingness to participate in this call (only if host organisation is a qualifying country)

- *Bulgaria, Croatia, Cyprus, Czechia, Estonia, Greece, Hungary, Latvia, Lithuania, Malta, Poland, Portugal, Romania, Slovakia, Slovenia and all Associated Countries with equivalent characteristics in terms of R&I performance (Albania, Bosnia & Herzegovina, Kosovo 2, Montenegro, North Macedonia, Serbia, Turkey, Armenia, Georgia, Moldova, Morocco, Tunisia, Ukraine, Faroe Islands) and the Outermost Regions (defined in Art. 349 TFEU). Guadeloupe, French Guyana, Réunion, Martinique, Mayotte and Saint Martin (France)*

EURATOM

- MSCA Postdoctoral Fellowships in this area of research will be supported by the Euratom Research and Training Programme 2021-2025 through an indicative annual financial contribution of **EUR 1 million** to the MSCA Postdoctoral Fellowships call .

Evaluation and award criteria

Excellence	Impact	Quality and efficiency of the implementation
Quality and pertinence of the project’s research and innovation objectives (and the extent to which they are ambitious, and go beyond the state of the art)	Credibility of the measures to enhance the career perspectives and employability of the researcher and contribution to his/her skills development	Quality and effectiveness of the work plan , assessment of risks and appropriateness of the effort assigned to work packages
Soundness of the proposed methodology (including <i>interdisciplinary</i> approaches, consideration of the <i>gender</i> dimension and other <i>diversity</i> aspects if relevant for the research project, and the quality of <i>open science</i> practices)	Suitability and quality of the measures to maximise expected outcomes and impacts , as set out in the dissemination and exploitation plan, including communication activities	Quality and capacity of the host institutions and participating organisations , including hosting arrangements
Quality of the supervision, training and of the two-way transfer of knowledge between the researcher and the host	The magnitude and importance of the project’s contribution to the expected scientific, societal and economic impacts	
Quality and appropriateness of the researcher’s professional experience , competences and skills		
50%	30%	20%

Postdoctoral Fellowships (PF) 2023 Call

Call planning

Call Opening:	12 April 2023
Call Deadline:	13 September 2023
Evaluation period:	October 2023 – January 2024
Launch Grant preparation:	March 2024
Project Starting dates:	April 2024 - September 2025

Postdoctoral Fellowships (PF) 2023 Call

Modes & Budget

EF

European
Fellowships

Held in EU Member States or Associated Countries

221.40 M€

GF

Global
Fellowships

Based on a Third Country

39.07 M€

Total Budget: 260.47 million €

[HORIZON-MSCA-2023-PF-01](#)

ERA Fellowships 2023 Call

Modes & Budget

ERA

ERA
Fellowships

Held in a 'Widening' country

Total Budget: 8 million € (indicative)

[HORIZON-WIDERA-2023-TALENTS-02](#)

Postdoctoral Fellowships (PF) 2023 Call

Novelties

WP 2022	WP 2023-2024
	Clarify wording for EF/GF scope + clarification secondments max duration (+ 3 months at beneficiary in GF)
	Successful PhD defence must be unconditional and take place before the call deadline
	Allow less than 50% part-time for medical reasons
Letter of Commitment (LoC) for associated partner hosting the non-academic placement	No LoC for associated partner hosting the placement required (only required for the associated partner hosting the GF outgoing phase)

Postdoctoral Fellowships (PF) 2023 Call Reminders

- **Resubmissions**

Proposals, with same host organisation (and for GFs also the same associated partner hosting the outgoing phase) and the same researcher, submitted to the PF 2021 call and having received a score of less than 70% **must not be resubmitted**.

- **Non-academic placements**

If the placement does not meet the requirements (taking place in an academic organisation or in a Third Country), the proposal will be evaluated without taking into account the non-academic placement. This might affect the final score.

- **Secondments vs NAPs**

Better guidance and instructions on how to properly encode this information to be found in the submission forms

Postdoctoral Fellowships (PF)

Applicable Unit Contributions

Contributions for recruited researchers Per person-month					Institutional unit contributions Per person-month	
Living allowance*	Mobility allowance	Family allowance (if applicable)	Long-term leave allowance (if applicable)	Special needs allowance (if applicable)	Research, training and networking contribution	Management and indirect contribution
EUR 5 080	EUR 600	EUR 660	EUR 5 680 x % covered by the beneficiary	Requested unit ¹ x (1/number of months)	EUR 1 000	EUR 650

*A country correction coefficient (CCC) applies to the living allowance in order to ensure equal treatment and purchasing power parity for all researchers.

Postdoctoral Fellowships (PF) 2022 Call

7 044 proposals received

- 6334 European Fellowships
- 710 Global Fellowships

Comparison to 2021 Call:

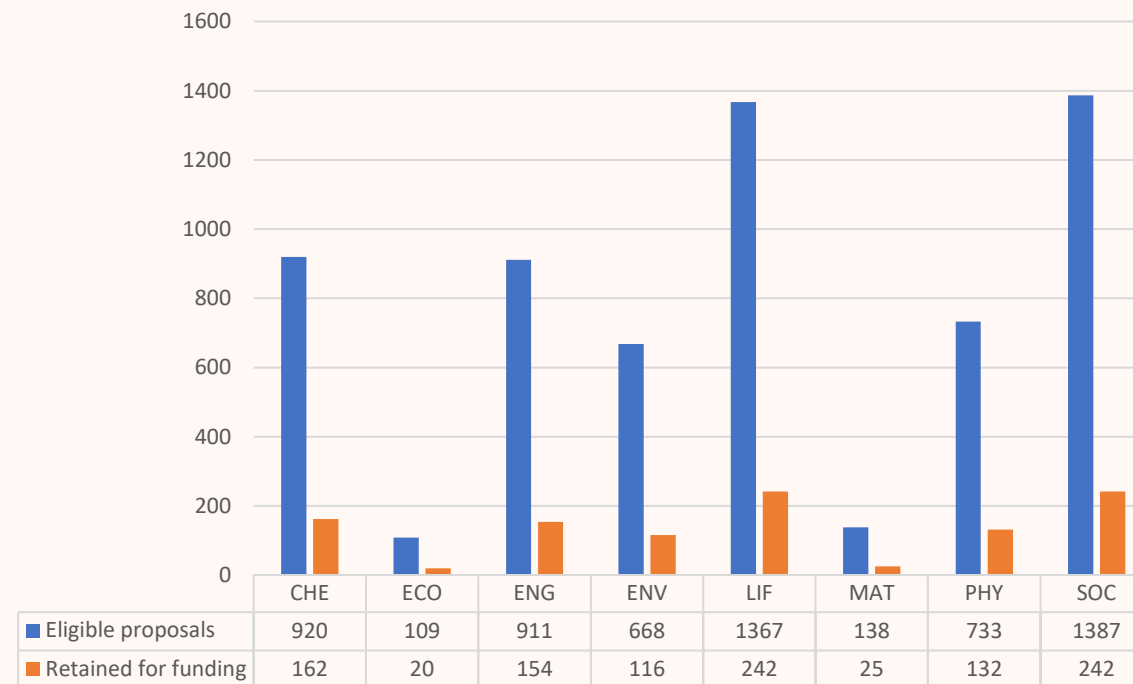
Call	European	Global
PF-2021	7519	837
PF-2022	6334	710
Difference	-15.76%	-15.17%

Postdoctoral Fellowships (PF) 2022 Call

Results – European Fellowships

Action	Eligible proposals	Funded
PF-EF	6233	1093
Grand total	6909	1235

Panel	Success rate EF
CHE	17,61%
ECO	18,35%
ENG	16,90%
ENV	17,37%
LIF	17,70%
MAT	18,12%
PHY	18,01%
SOC	17,45%
Grand Total	17,54%

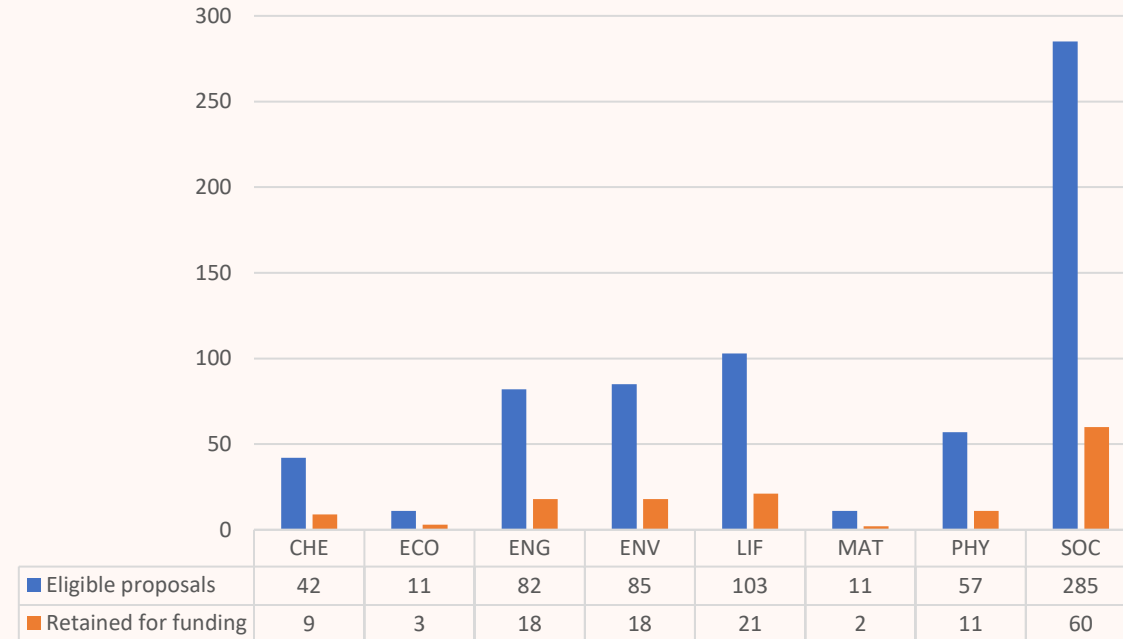


Postdoctoral Fellowships (PF) 2022 Call

Results – Global Fellowships

Action	Eligible proposals	Funded
PF-GF	676	142
Grand total	6909	1235

Panel	Success rate GF
CHE	21,43%
ECO	27,27%
ENG	21,95%
ENV	21,18%
LIF	20,39%
MAT	18,18%
PHY	19,30%
SOC	21,05%
Grand Total	21,01%

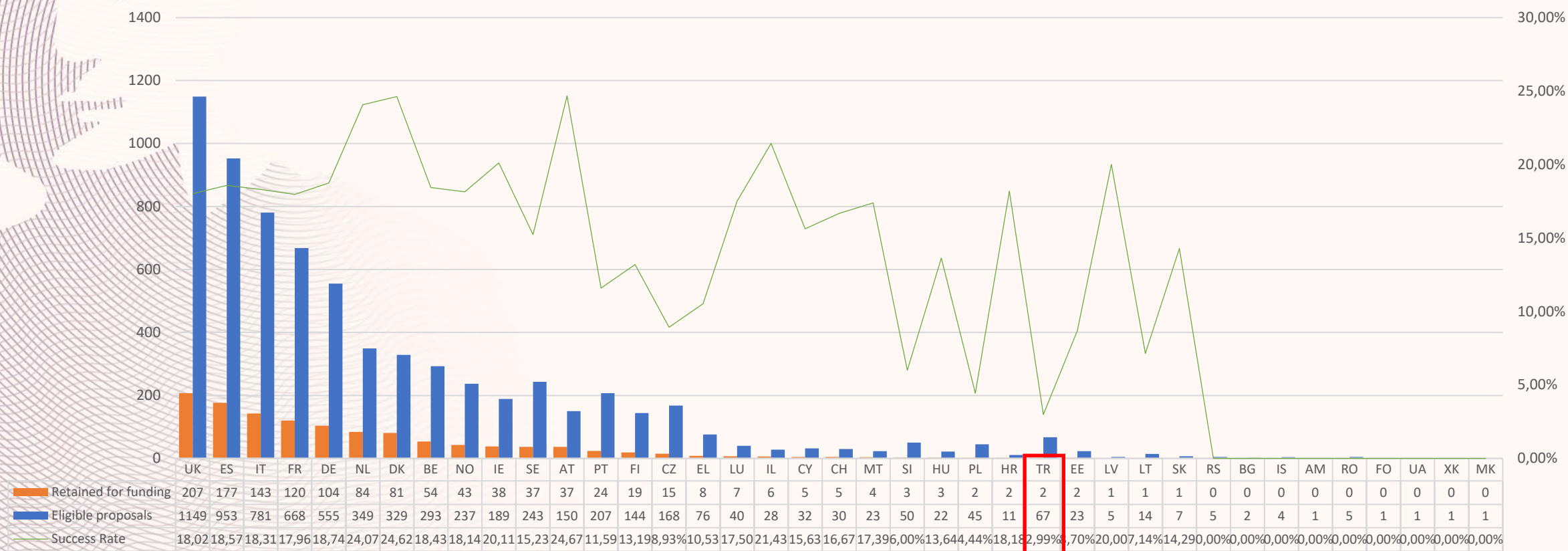


Postdoctoral Fellowships (PF) 2022 Call

	MSCA-PF-2022: Cumulative percentage of proposals above threshold, with a given score or higher (funding range marked in green)															
Number of <u>eligible</u> proposals	920 proposals	109 proposals	911 proposals	668 proposals	1367 proposals	138 proposals	733 proposals	1387 proposals	42 proposals	11 proposals	82 proposals	85 proposals	103 proposals	11 proposals	57 proposals	285 proposals
Cut off score for funding*	91,8	89,4	92,4	92,6	93,6	92,2	92,4	93,0	95,0	81,0	96,4	94,0	92,6	90,8	93,4	93,6
Score equal to or above	EF-CHE	EF-ECO	EF-ENG	EF-ENV	EF-LIF	EF-MAT	EF-PHY	EF-SOC	GF-CHE	GF-ECO	GF-ENG	GF-ENV	GF-LIF	GF-MAT	GF-PHY	GF-SOC
100	0,65%	1,83%	0,33%	0,90%	0,51%	0,72%	0,82%	1,15%	0,00%	0,00%	2,44%	2,35%	1,94%	0,00%	0,00%	1,75%
99	1,41%	1,83%	0,66%	1,35%	1,98%	0,72%	1,64%	2,02%	2,38%	0,00%	4,88%	4,71%	3,88%	0,00%	1,75%	2,46%
98	2,93%	2,75%	2,74%	4,04%	4,88%	2,90%	3,55%	4,25%	11,90%	0,00%	10,98%	5,88%	6,80%	0,00%	1,75%	4,91%
97	4,02%	3,67%	4,83%	5,99%	7,75%	6,52%	4,77%	6,71%	11,90%	0,00%	18,29%	9,41%	7,77%	0,00%	3,51%	7,72%
96	6,30%	4,59%	7,03%	8,23%	10,75%	9,42%	7,78%	9,86%	19,05%	0,00%	24,39%	15,29%	11,65%	9,09%	8,77%	11,58%
95	8,70%	6,42%	8,89%	11,08%	14,34%	10,87%	9,96%	12,26%	21,43%	0,00%	29,27%	17,65%	13,59%	9,09%	10,53%	15,09%
94	11,52%	9,17%	12,62%	14,52%	16,97%	13,04%	13,10%	14,92%	21,43%	0,00%	32,93%	22,35%	13,59%	9,09%	14,04%	18,95%
93	14,78%	10,09%	15,37%	16,47%	20,19%	16,67%	16,78%	17,74%	21,43%	0,00%	32,93%	27,06%	17,48%	9,09%	21,05%	22,11%
92	17,28%	12,84%	18,22%	18,86%	23,04%	18,84%	20,06%	20,55%	28,57%	0,00%	36,59%	30,59%	22,33%	9,09%	26,32%	25,26%
91	20,00%	14,68%	20,75%	22,01%	25,82%	21,74%	22,51%	22,78%	30,95%	0,00%	40,24%	37,65%	24,27%	9,09%	26,32%	27,02%
90	23,70%	15,60%	23,16%	25,75%	29,33%	26,09%	26,19%	25,16%	35,71%	0,00%	42,68%	37,65%	29,13%	18,18%	31,58%	29,82%
89	26,85%	18,35%	26,56%	28,29%	32,48%	30,43%	29,60%	27,54%	40,48%	0,00%	48,78%	42,35%	33,98%	18,18%	36,84%	31,23%
88	30,11%	20,18%	28,65%	30,69%	35,70%	34,06%	32,20%	29,99%	42,86%	0,00%	51,22%	45,88%	38,83%	18,18%	40,35%	35,44%
87	33,04%	23,85%	31,06%	34,88%	38,84%	37,58%	35,33%	32,23%	45,24%	0,00%	54,88%	49,41%	41,75%	18,18%	47,37%	36,49%
86	36,74%	24,77%	33,59%	38,32%	42,06%	40,58%	38,74%	34,10%	57,14%	9,09%	59,76%	52,94%	44,66%	18,18%	49,12%	38,25%
85	39,35%	24,77%	36,55%	41,92%	45,87%	44,20%	43,38%	36,27%	64,29%	9,09%	62,20%	55,29%	48,54%	27,27%	54,39%	41,75%
84	41,85%	26,61%	38,97%	44,91%	49,38%	46,38%	47,75%	38,43%	66,67%	9,09%	64,63%	56,47%	52,43%	27,27%	56,14%	43,86%
83	45,65%	30,28%	41,05%	47,75%	52,52%	50,72%	51,30%	40,95%	71,43%	9,09%	67,07%	61,18%	57,28%	36,36%	59,65%	46,67%
82	47,50%	32,11%	44,35%	50,15%	54,79%	52,17%	54,02%	43,40%	76,19%	18,18%	70,73%	63,53%	61,17%	36,36%	61,40%	49,82%
81	50,43%	33,94%	46,21%	53,59%	57,72%	53,62%	57,98%	45,06%	80,95%	27,27%	70,73%	65,88%	63,11%	36,36%	61,40%	52,63%
80	54,57%	35,78%	47,97%	57,04%	60,57%	55,07%	61,66%	47,15%	80,95%	45,45%	73,17%	70,59%	66,02%	36,36%	63,16%	54,74%

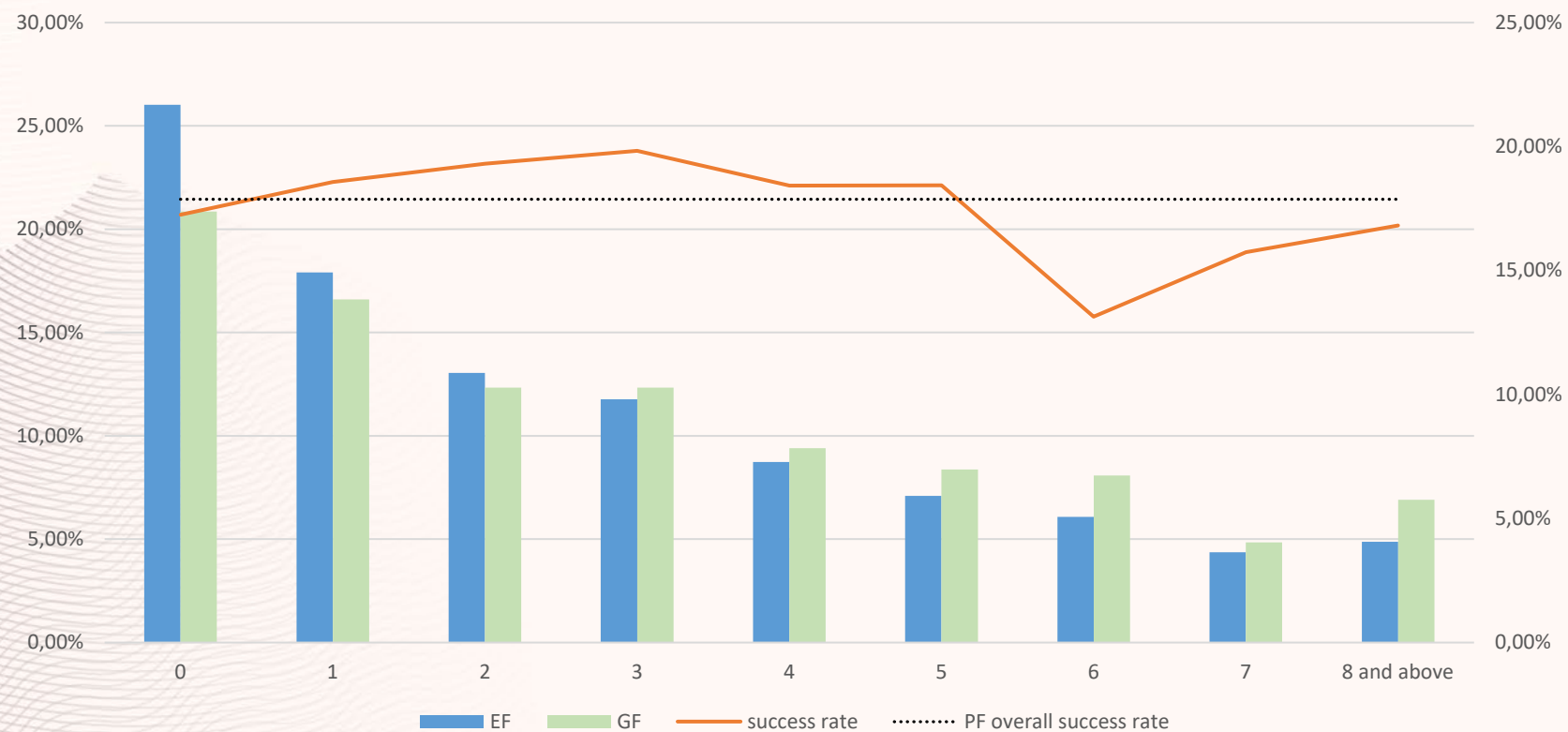
Postdoctoral Fellowships (PF) 2022 Call

Success rate per country



Postdoctoral Fellowships (PF) 2022 Call

Scientific Age of Researchers & Success Rate



ERA Fellowships 2022 call: results

331 proposals considered admissible and eligible for ERA-PF 2022.

Comparison to 2021 call: both ERA Fellowships and MSCA Fellowships see a decline in submissions, however, it is less pronounced for ERA.

ERA-Fellowships	
Call	Eligible Proposals
ERA-PF-2021	353
ERA-PF-2022	331
difference	-6,23%

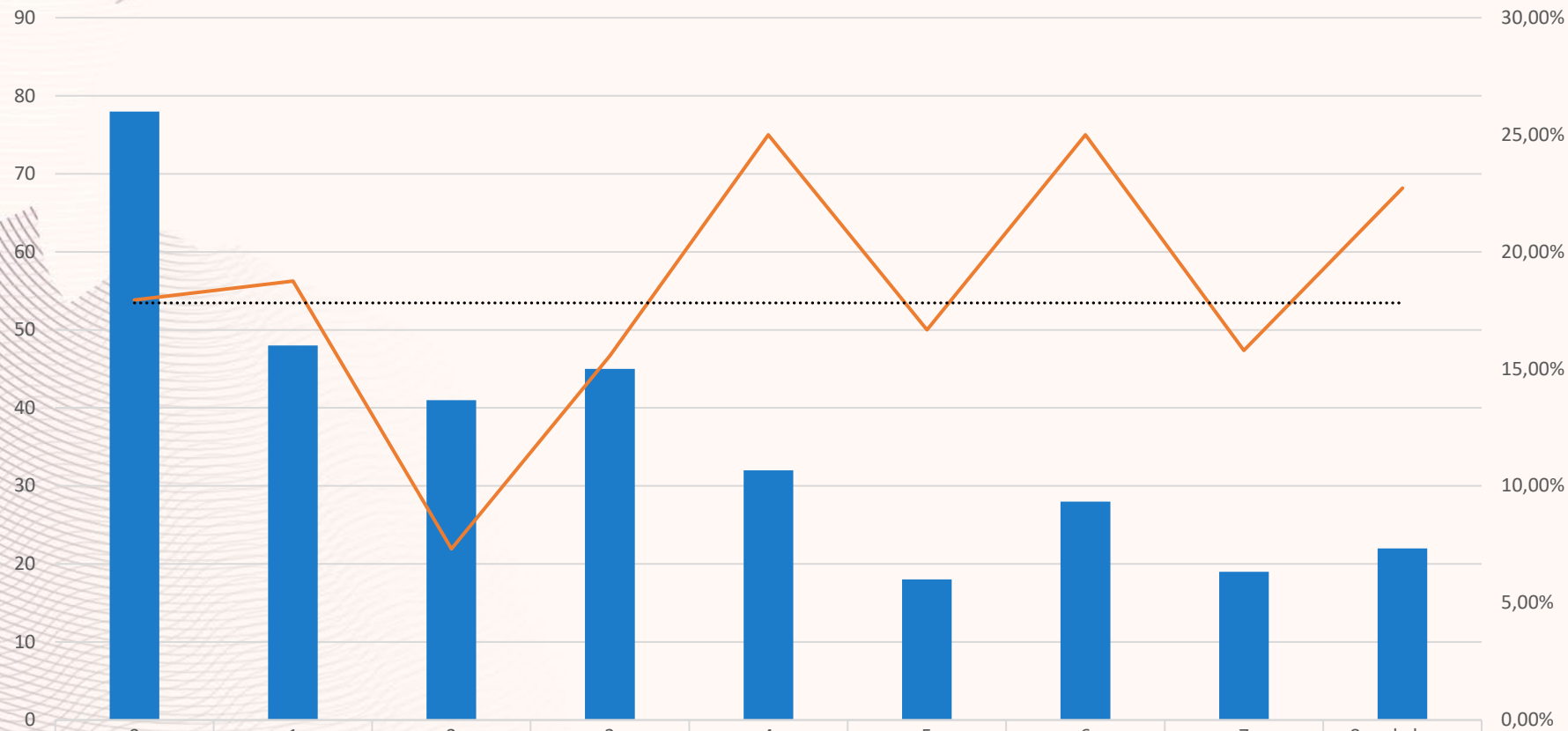
ERA Fellowships 2022 call by country



European
Commission

ERA Fellowships 2022 call

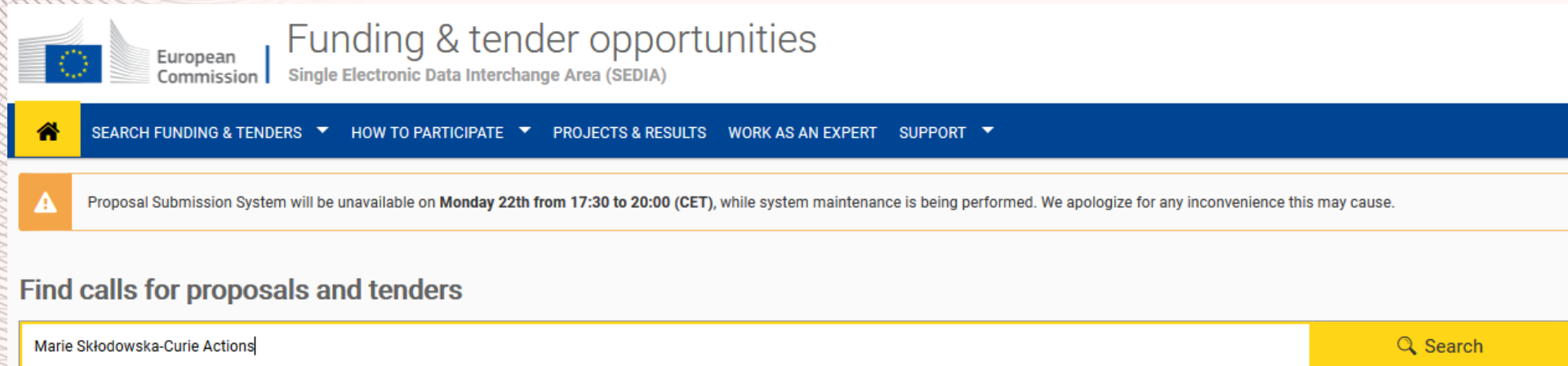
Scientific Age of Researcher & Success Rate





ERA proposals	78	17,95%
success rate	48	18,75%
ERA overall success rate	41	7,32%
	45	15,56%
	32	25,00%
	18	16,67%
	28	25,00%
	19	15,79%
	22	22,73%

How to apply?

- All calls are published on the [Funding and Tender Portal](#)
- Applications are submitted through the portal:




 **European Commission** | Funding & tender opportunities
Single Electronic Data Interchange Area (SEDIA)

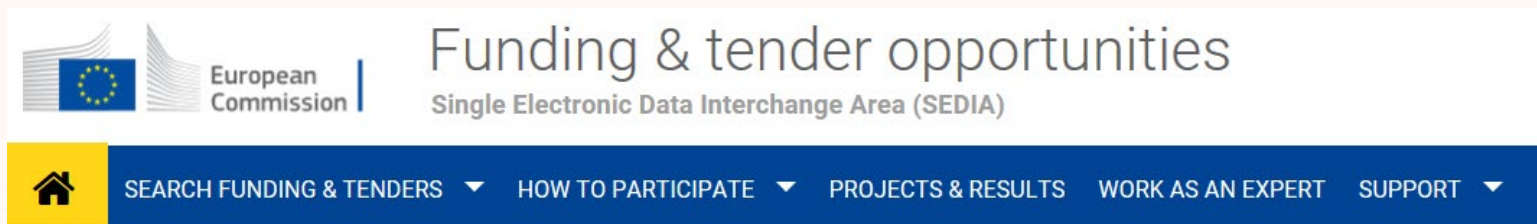
 [SEARCH FUNDING & TENDERS](#) ▾ [HOW TO PARTICIPATE](#) ▾ [PROJECTS & RESULTS](#) [WORK AS AN EXPERT](#) [SUPPORT](#) ▾

 Proposal Submission System will be unavailable on **Monday 22th from 17:30 to 20:00 (CET)**, while system maintenance is being performed. We apologize for any inconvenience this may cause.

Find calls for proposals and tenders

 Search

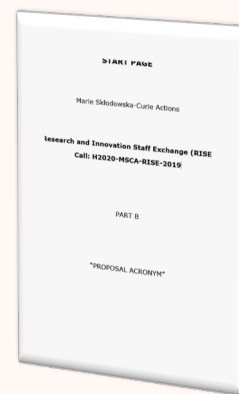
How to apply?



Part A (structured data)

Section	Type
1.	General information
2.	Participants & contacts
3.	Budget
4.	Ethics
5.	Call-specific questions

Part B (description of action)



10 page limit

Proposal submission – Part A: Key features (1)

Part A: use of submission wizard

A Guide on “How to complete Part A within the submission forms” is available

Researcher information:

- PhD award date only, no other qualification fields available
- Residency and activity table
- Table for extensions on the 8-year post PhD limit – number of days/category only, beneficiary to keep relevant records

Beneficiary information:

- PIC based: same principle as H2020
- Non-academic placement host

A document, and a corresponding Self-assessment tool, aim to guide the applicants towards calculating the possible deductions of their 8 years FTE experience in research

Budget:

- Family allowance (selection box as H2020)
- Long term leave allowance and special needs allowance (not visible in proposal as cannot be requested at this stage)

Horizon Europe MSCA - How to apply:

https://rea.ec.europa.eu/funding-and-grants/horizon-europe-marie-sklodowska-curie-actions/horizon-europe-msca-how-apply_en#postdoctoral-fellowships--call-2022

Proposal submission – Part A

Key features (2)

Call specific questions (non-exhaustive)

- Euratom: applicant to confirm if they qualify for the Euratom topics/conditions
- **ERA Fellowships**: applicant to confirm if they wish to be considered for ERA call (question appears based on qualifying PIC country)
- Secondment information
- Optional non academic placement information

Keywords are updated for HE

- main principle remains: KW's 1, 2 mandatory and of selected scientific panel, KW 3 mandatory and of any panel, KW's 4 and 5 optional and of any panel

Resubmissions

- Question will appear in the forms

Proposal Submission- Part B

Part B-1

- strictly restricted to 10 pages;
- a cover page, table of contents, ...on page 1, 2, **will count** towards the page limit and automatically result in excess pages that cannot be evaluated;
- the Part B-1 should start with “1. Excellence” (instructions, definitions to be deleted before submission).

Part B-2

- no page restriction;
- Participating organisations (max 1 page for beneficiary, max ½ page others);
- Researcher's CV;
- Letters of commitment (host for outgoing phase of GF)
- Ethics & Security (additional info, if needed)

Do's and Dont's

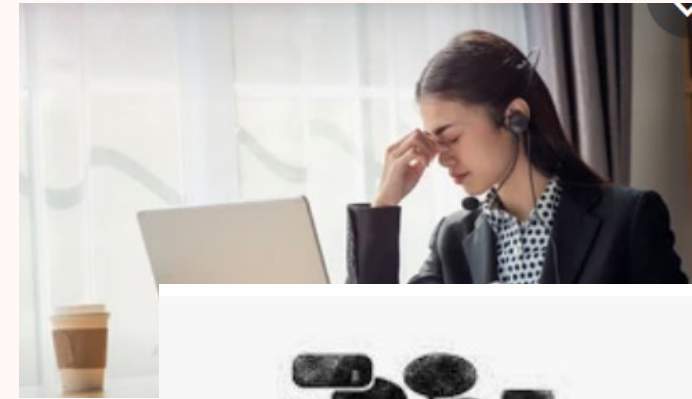
FORMAT

- Read very carefully all available material and follow it closely;
- Check carefully eligibility;
- Stick to the format requested (font size and page numbers);
- Make sure the layout is clear and not too busy/confused

CONTENT

- Think about the objectives of the MSCA;
- Make sure you cover all aspects as outlined and in a clear way;
- Have in mind the evaluation criteria;
- A clear Gantt Chart is essencial;
- A good and clear letter(s) of commitment is important.

Think about the evaluators



Resources and guidance

- Guide for applicants: overview of rules, financial aspects, etc.
- MSCA Work Programme and annexes
- Calculation of 8-years research experience in Postdoctoral Fellowships
- How to complete Part A within the submission forms (under preparation)
- Proposal templates
- Model Grant Agreements
- Online manual on how to submit an application
- Frequently Asked Questions
- Guidelines on Supervision: <https://data.europa.eu/doi/10.2766/508311>
- Green Charter: <https://data.europa.eu/doi/10.2766/720690>

If needed ask for advice to your MSCA National Contact Point
(list available on F&T Portal)

Resources and guidance



Marie Skłodowska-Curie Website

https://ec.europa.eu/research/mariecurieactions/node_en

Research Enquiry Service

https://ec.europa.eu/info/research-and-innovation/contact/research-enquiry-service_en

National Contact Points

<https://ec.europa.eu/info/funding-tenders/opportunities/portal/screen/support/ncp>

Funding and Tenders Portal (applications)

<https://ec.europa.eu/info/funding-tenders/opportunities/portal/screen>



Questions?

**# HorizonEU #MSCA
@MSCActions**

<https://ec.europa.eu/research/mariecurieactions/>



© European Union 2021

Unless otherwise noted the reuse of this presentation is authorised under the [CC BY 4.0](https://creativecommons.org/licenses/by/4.0/) license. For any use or reproduction of elements that are not owned by the EU, permission may need to be sought directly from the respective right holders. Image sources: iStockphoto.com/Unsplash

