



Horizon Europe Programme

Guide for Applicants

Marie Skłodowska-Curie Actions – Staff Exchanges (SE)

Version 6.0 - 2026
16 December 2025

Disclaimer

This guide aims to support potential applicants to the MSCA-SE 2026 call. It is provided for information purposes only and is not intended to replace consultation of any applicable legal sources. Neither the European Commission, nor the European Research Executive Agency (or any person acting on their behalf) can be held responsible for the use made of this guidance document. The guidance provided in the MSCA Financial Guide shall prevail in case of discrepancies.



History of changes

Version	Date	Change	Page
1.0 2021	7.10.2021	<ul style="list-style-type: none"> Initial version (2021 call) 	-
2.0 2022	6.10.2022	<ul style="list-style-type: none"> Section 1: Clarification about the eligibility criterion "Gender Equality Plan". Section 3.1: Clarifications regarding the definitions of low-middle income countries, associated partners linked to beneficiary, etc... Section 4.2: Better explanation how to encode "Secondments from participants from other countries". The table 2 has been updated to better explain the eligibility. Additional paragraph at the bottom of section 5: to better guide applicants to fill out the budget table, for Third Countries' participants (high-income & low-middle income). 	-
3.0 2023	5.10.2023	<ul style="list-style-type: none"> Section 4.2: Information about Complementary funding mechanisms in third countries and territories. Artificial Intelligence (A.I.). Removal of instruction on interdisciplinary secondments related to template Part B table 2. 	-
4.0 2024	16.09.2024	<ul style="list-style-type: none"> Section 1: Inclusion of link to definitions of Academic Sector, Non-academic sector, Associated partners, Beneficiaries and other useful definitions in the Horizon Europe - Work Programme 2023-2025 Marie Skłodowska-Curie Actions. Section 1: Addition of a link to Horizon Europe guidance on gender equality plans and related FAQs. Section 3: Footnote added to clarify the full-time work. Section 4: Updated Unit Contributions. Section 5: Information clarifying how to input 0 person-month for Associated Partners in the budget table (Part A). Section 5: Removal of references to the Letter of Commitment. Section 5: Update of Information for completing Part A and Part B of the proposal concerning the keywords and Artificial Intelligence (A.I.). 	
5.0 2025	27.03.2025	<ul style="list-style-type: none"> Minor editorial changes; update of hyperlinks Section 1: Added clarification: "However, those with a purely administrative role..." Section 3.1: Footnotes added for associated partners linked to a beneficiary and academic / non-academic. Section 4.1: Added the term "cumulative". Table 3: Footnote added: "Staff working part-time..." Section 4.2: Added footnote: "i.e., bringing unique expertise"... Section 4.4: Clarification on secondments added. 	
6.0 2026	16.12.2025	<ul style="list-style-type: none"> Section 3: update of the WP 2026-2027 with: <ul style="list-style-type: none"> Change in consortium composition eligibility rule. Removal of staff 1 month eligibility rule. Removal of 1/3 interdisciplinary rule. Update of Award sub-criterion Excellence. Addition of minimum threshold of 3 on all criteria. Section 5: the assessment of the technical robustness of AI systems is no longer required under criterion 1. Minor editorial changes and update of hyperlinks. 	

Table of Contents

1. Staff Exchanges – A few definitions and concepts.....	4
2. Staff Exchanges in a nutshell	5
3. Eligibility Conditions	6
3.1 Minimal conditions for a consortium	6
3.2 Staff member eligibility	7
4. Secondments	8
4.1 Secondment duration and split stays	8
4.2 Sending and hosting organisations	8
4.3 Distribution of secondments	9
4.4 Unit contributions.....	9
5. Information for completing Part A and Part B of the proposal	10

1. Staff Exchanges – A few definitions and concepts

All main definitions (not included in this guide) are available in the [MSCA part of the Horizon Europe Work Programme 2026-2027](#) and the [MSCA Financial guide](#). Links to other official documents (e.g., [Horizon Europe General Annexes](#) of the Work Programme, [Horizon Europe Unit Model Grant Agreement](#), [Horizon Europe Programme Guide](#), [List of the Participating Countries in Horizon Europe](#) are provided in the [call page on the Funding & Tenders Portal](#).

The objective of Staff Exchanges is to provide support for joint research and innovation (R&I) projects through the exchange of staff within partnerships of universities, research infrastructures, businesses, and other socio-economic actors in Europe and beyond. MSCA-SE is a multibeneficiary action. The collaborative approach in Staff Exchanges aims to set-up interdisciplinary, inter-sectoral (between the academic and non-academic sectors) and international (i.e. between EU Member States/Associated countries and non-associated third countries) partnerships between participating organisations and the acquisition of new skills and competences for the staff involved.

A Staff Exchanges project is a high quality and credible R&I project with an original idea demonstrating a clear added value to the state-of-the-art in its scientific field. The project should be realised through well-planned and targeted knowledge-sharing activities and proposed interactions between the participating organisations. Projects can be implemented together with other related R&I activities funded by another EU grant (e.g., Erasmus+, Structural Funds, Horizon Europe grants except the MSCA, etc.), if this does not entail double funding¹.

⚠ IMPORTANT: It is not possible to have the same staff member funded at the same time under two or more MSCA grants for the same activity.

The implementation of the project is performed via the secondment of staff to other beneficiaries and associated partners from the academic and/or non-academic sectors². Additional activities to enable networking and the organisation of workshops and conferences, to facilitate sharing of knowledge and testing of innovative approaches for specific R&I topics, also contribute to the successful implementation of the project.

The staff members can be researchers at any career stage (from doctoral candidates to postdoctoral researchers), as well as administrative, managerial, or technical staff supporting the R&I activities under the project. However, those with a purely administrative role (e.g., accountants) are not considered to be actively involved in the R&I activities of the organisation.

The coordinator is one of the beneficiaries and the main contact point for the European Research Executive Agency (REA). The coordinator represents the consortium to REA. The coordinator's responsibilities are elaborated in the [Horizon Europe Unit Model Grant Agreement](#) (Article 7).

Interdisciplinary: Secondments are considered as *interdisciplinary* if the activities performed during the secondment integrate aspects (information, data, techniques, tools, perspectives, concepts, or theories) from two or more different scientific disciplines. In assessing the interdisciplinary dimension of proposals, expert evaluators will consider the keywords in part A of the application form, referring to the [first level of MSCA keywords](#). This could for example be C1-Inorganic Chemistry and C2-Organic,

¹ See notes on synergies between the MSCA, Erasmus+ and the EIT, available on <https://op.europa.eu/en/publication-detail/-/publication/40f1a820-2cc2-11ed-975d-01aa75ed71a1/language-en> and <https://marie-sklodowska-curie-actions.ec.europa.eu/document/synergies-between-the-marie-sklodowska-curie-actions-and-erasmus-in-the-area-of-higher-education>

² See definitions of Academic Sector, Non-academic sector, Associated partners, Beneficiaries and other useful definitions in the [Horizon Europe - Work Programme 2026-2027 Marie Skłodowska-Curie Actions](#)

Polymer and Molecular Chemistry, or C1-Inorganic Chemistry and E1-Economics. You may find instructions on how to encode it under [section 5](#) of this guide. The interdisciplinarity of the proposal will be assessed under the Excellence criterion.³

National Contact Points (NCPs) have been set up by national governments across Europe and beyond to provide information and personalised support to Horizon Europe applicants in their native language. The mission of NCPs is to raise awareness, inform and advise on Horizon Europe funding opportunities as well as to support potential applicants in the preparation, submission, and follow-up of their grant applications. For details on the NCP in your country, please consult the [NCP web page](#).

Gender Equality Plan: Having a gender equality plan is an eligibility criterion for all public bodies, and for public and private higher education establishments and research organisations from Member States and Horizon Europe Associated Countries. Be aware that if the proposal is selected, having a Gender Equality Plan will be necessary before the grant agreement signature. Please refer to the [Horizon Europe guidance on gender equality plans](#) and related [FAQs](#).

2. Staff Exchanges in a nutshell

Table 1: Overview

Overview	
Minimum number of participating organisations ⁴	3 in 3 different countries
Minimum number of beneficiaries from EU Member States or Horizon Europe Associated Countries ⁵	2
Min number of participants from <u>Academic</u> sector ⁶	1
Min number of participants from <u>Non-academic</u> sector ⁷	1
Number of associated partners	No minimum
Max number of person months (PM)	360
Secondment duration ⁸	1 – 12 months
Intersectoral secondments	Must be between academic and non-academic sector
Ranking lists ⁹	8 (scientific) panels ¹⁰
Budget 2026	97.92 Million €

³ See [section 1](#) for definition.

⁴ MSCA-SE is a multibeneficiary action.

⁵ Association to Horizon Europe is governed by the Horizon Europe Regulation (EU) 2021/695 of the European Parliament and of the Council of 28 April 2021 establishing Horizon Europe – the Framework Programme for Research and Innovation, laying down its rules for participation and dissemination, and repealing Regulations (EU) No 1290/2013 and (EU) No 1291/2013 (OJ 12.5.2021 L 170/1).

⁸ The minimum secondment duration of each eligible staff member is 1 month. The maximum duration is 12 months. The secondment of a staff member may be split into several stays with one or several beneficiaries or associated partners.

⁹ All eligible proposals will be evaluated under one of the eight major areas of research (known as scientific panels). Each panel will establish a ranked list of proposals for funding.

¹⁰ Chemistry (CHE); Social Sciences and Humanities (SOC); Economic Sciences (ECO); Information Science and Engineering (ENG); Environment and Geo-Sciences (ENV); Life Sciences (LIF); Mathematics (MAT), and Physics (PHY).

Table 2: Summary of tasks

Status ¹¹	Sign Grant Agreement	Secondment of staff	Training and/or hosting of seconded staff	Directly claim costs
Beneficiary*	✓	✓	✓	✓
Associated partner**	x	✓	✓	x

* Beneficiaries not requesting EU funding (e.g., not seconding staff, nor hosting staff from an associated partner from third country eligible for funding) are not allowed under Horizon Europe rules, except for the European Commission Joint Research Centre (JRC). They can participate as associated partners only.

** Only secondments from associated partners located in low to middle-income third countries included in the [List of Participating Countries in Horizon Europe](#) are eligible for funding (see [section 4.2](#) below).

3. Eligibility Conditions

3.1 Minimal conditions for a consortium

The minimal conditions when forming an MSCA Staff Exchanges consortium consist of three elements:

- **Members of consortium:** Composed of at least three legal entities independent of each other.
- **Countries¹²:** Organisations established in three different countries, of which at least two must be established in different EU Member States and/or Horizon Europe Associated Countries.
- **Sectors:** The consortium must include participating organisations from both academic and non-academic sectors.

Above these minimum requirements, additional organisations established in Member States/Associated Countries and/or in non-associated third countries can participate under the conditions provided by the [Horizon Europe rules for participation and dissemination](#).

Only legal entities that are established in EU Member States or Horizon Europe Associated Countries can be beneficiaries. Legal entities located in third countries not associated to Horizon Europe participate as Associated Partners only. There is no pre-defined size for Staff Exchanges projects. Based on previous calls, the average size of the consortia is between 6 to 10 organisations (beneficiaries and associated partners). The number of associated partners should remain reasonable and commensurate with the size of the network.

¹¹ See definition for Beneficiary and Associated Partner in the [Horizon Europe - Work Programme 2026-2027 Marie Skłodowska-Curie Actions](#).

¹² International organisations with headquarters in an EU Member State or Horizon Europe Associated Country are deemed to be established in this Member State or Associated Country. The Joint Research Centre, international European research organisations and legal entities created under EU law are deemed to be established in a Member State other than those in which the other legal entities participating in the action are established. International European research organisations, the majority of whose members are Member States or Associated Countries and whose principal objective is to promote scientific and technological cooperation in Europe, are eligible to receive funding (see [MSCA Work Programme](#)).

IMPORTANT:

1. The sector of the organisation (academic vs. non-academic)¹³ is ultimately determined by the validation of the legal entity through registration in the Funding & Tenders Portal. The data provided for the registration/validation of the legal entity will automatically classify the organisation in one of the two sectors and will help ensure that eligibility conditions are met.
2. Only low to middle-income third countries listed in the [List of Participating Countries in Horizon Europe](#) are automatically eligible to receive funding for sending a staff member to an EU Member State and Horizon Europe Associated Country.
3. For secondments from **associated partners linked to a beneficiary**¹⁴, only the sector (academic or non-academic) of the beneficiary counts. The linked associated partners will be considered to belong to the same sector as their beneficiary. The involvement of associated partners linked to a beneficiary must NOT be used to circumvent the eligibility conditions stated in the [MSCA part of the Work Programme](#) (as described in [General Annex B](#)). Associated partners linked to a beneficiary should be included in Part B section 3.2 of the proposal.
4. For the minimum consortium composition, legal entities must be independent from each other and located in different countries. Beyond this minimum requirement there can be more entities located in the same countries. Secondments between entities located in the same country are NOT allowed.


Secondments from branches/departments of a beneficiary/associated partner to other branches/departments of the same beneficiary/partner are NOT allowed, even if they are located in different countries.

Secondments between associated partners linked to a beneficiary and their linked beneficiary are NOT possible.

3.2 Staff member eligibility

Staff seconded under MSCA Staff Exchanges must comply with the specific eligibility conditions summarised in Table 3 below.

Table 3: List of conditions for staff eligibility

Condition	Explanation
1. Be considered staff of the sending organisation	<div><input checked="" type="checkbox"/> Type of relationship (employment contract, fellowship or other¹⁵) between the staff member and the sending organisation must comply with the applicable national law and internal practices (e.g., PhD candidate is sufficient to be considered staff member at the organisation where they are registered).</div> <div><input checked="" type="checkbox"/> The staff member must be under the direction and instructions of the sending organisation for the duration of the secondment.</div> <div> IMPORTANT: In case a person is a member of staff of two or more independent organisations, which are participating in an MSCA Staff</div>

¹³ See definition for Academic Sector and Non-academic sector in the [Horizon Europe - Work Programme 2026-2027 Marie Skłodowska-Curie Actions](#).

¹⁴ See definition for Associated partners linked to a beneficiary in the [Horizon Europe - Work Programme 2026-2027 Marie Skłodowska-Curie Actions](#).

¹⁵ Staff working part-time may participate in the action, if there is a change in their contractual relationship, such as a conclusion of an additional contract or a supplementary agreement, to allow the secondment to be implemented on a full-time basis.

	Exchanges project, this person can only be seconded from one of these organisations. Moreover, the staff member can only be seconded to organisations with which he/she is not affiliated.
2. Have the appropriate R&I experience	<input checked="" type="checkbox"/> Staff members shall have appropriate competence to implement the project and R&I work packages and deliverables. Moreover, those with a purely administrative role (e.g., accountants) are not considered to be actively involved in the R&I activities of the organisation. Therefore, they are not eligible for secondments.
3. Return to the sending institution	<input checked="" type="checkbox"/> After the period of secondment, seconded staff should return to their sending institution , thus maximising the impact of the action for knowledge sharing and long-term collaboration.

4. Secondments

4.1 Secondment duration and split stays

MSCA Staff Exchanges **secondments are the core of the R&I project**. The secondments for each staff member must be a minimum of 1 (cumulative) month and a maximum of 12 months (independently of the number of organisations the staff member is seconded to). A secondment may be split into several stays (referred to as a "split stay") with one or several beneficiaries or associated partners if it respects the above-mentioned minimum and maximum duration (1 – 12 months). The duration of the secondment is counted from the day of departure to the day of return.

4.2 Sending and hosting organisations

Secondments must always take place between **different countries**.

Secondments from beneficiaries from EU Member States / Horizon Europe Associated Countries are **eligible for funding**.

Secondments from associated partners located in low and middle-income third countries included in the [List of Participating Countries in Horizon Europe](#) on the Funding & Tenders Portal are **eligible for funding**.

Secondments from participants from "Other Countries" (not in the [List of Participating Countries in Horizon Europe](#)) are **not eligible for funding** and therefore by default have to participate at their own cost. They may, however, receive funding exceptionally, if the granting authority considers that their participation is essential¹⁶ for implementing the project. In case of exceptional funding request, two requirements are mandatory in the proposal:

1. Encode the "number of seconded researchers" and "number of person months" in the budget table (Part A, section 3).
2. Add a paragraph justifying the exceptional funding request in proposal Part B1 - section 3.2 (Quality, capacity, and role of each participant, including hosting arrangements and extent to which the consortium as a whole brings together the necessary expertise).

In addition, the applicants may consider at the time of preparing their proposals the existence of [HE Complementary funding mechanisms in third countries](#).

The eligibility rules for EU funding for organisations from the [List of Participating Countries in Horizon Europe](#) are summarised in the table below.

¹⁶ i.e., bringing unique expertise in the context of the project that cannot be found in Europe, which is critical for the success of the research.

Eligibility for EU funding of secondments for sending organisation

		"HOSTING" (receiving seconded staff members)		
"SENDING" (sending staff members from organization)		Organisation in MS/AC (2)	Associated Partners eligible for funding	Associated Partners non-eligible for funding
	Organisation in MS/AC (1)	✓	✓	✓
	Associated Partners eligible for funding	✓	✗	✗
	Associated Partners non-eligible for funding	✗	✗	✗

4.3 Distribution of secondments

There are no restrictions regarding the distribution of secondments between participating organisations. Rather, all secondments should be relevant for the implementation of the R&I action and reflect the involvement and tasks of all participating organisations during the project. The planning should be realistic, time bound and should ensure adequate measures to cope with unforeseen/unexpected delays.

In MSCA Staff Exchanges, secondments should be always between different countries and mainly *international* (i.e., between EU Member States/Associated Countries and non-associated third countries) and/or *intersectoral* (i.e., secondments between different Member States/Associated Countries and between different sectors).

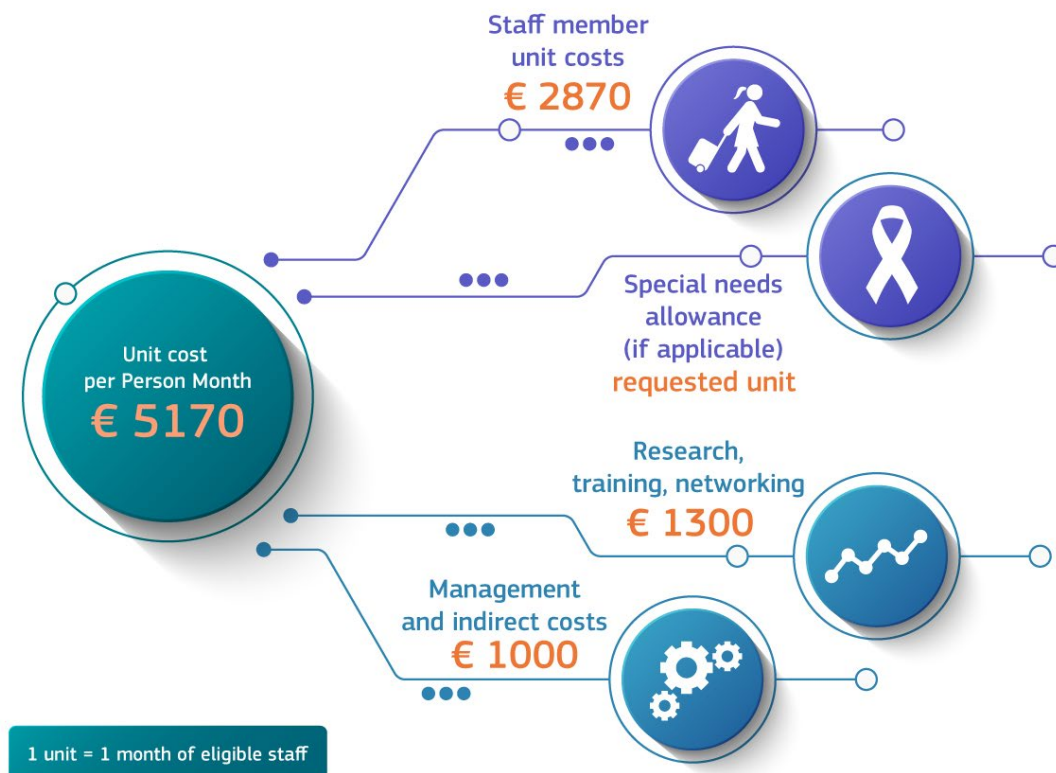
4.4 Unit contributions

The financial contribution to an MSCA Staff Exchanges project is calculated based on **unit contributions**, as defined in the specific conditions of the [MSCA part of the Horizon Europe Work Programme](#) (See the figure below). The budget will be calculated based on the person-months provided in the indicative budget table in Part A of the proposal.

⚠ IMPORTANT: the EU contribution indicated in the Grant Agreement is calculated based on the planned secondments eligible for funding. The final payable amount of the MSCA Staff Exchanges project will be equal to the performed eligible secondments during the project's lifetime. The maximum number of secondments eligible for funding is 360 person-months.

⚠ IMPORTANT: the salary of the seconded staff member or any other type of remuneration (*if applicable*) is not covered by the EU contribution. Therefore, the beneficiaries and associated partners are expected to continue paying the staff member's salary (or any other type of remuneration) during their stay abroad.

MSCA Staff Exchanges Unit Contribution



⚠ IMPORTANT: any secondments planned to do exclusively management activities (e.g., project coordination meetings, report drafting, etc.) as well as communication, dissemination and training not related to the R&I activities of the project, will not be eligible.

5. Information for completing Part A and Part B of the proposal

The MSCA Staff Exchanges proposal template can be downloaded from the [call page](#) on the [Funding & Tenders Portal](#). All instructions for completing parts A and B of the proposal are embedded in the template and should be removed before proposal submission. A clean version is also available at the end of the template.

The [list of MSCA keywords](#) as well as guidance material can be found on the [REA website](#). The keywords will help REA to identify the most qualified and suitable experts to evaluate the submitted proposals.

In the Electronic Submission Service, the applicant chooses the scientific panel to which the proposal will be associated at the proposal stage (using the field "Scientific Panel" in section 1 of the proposal submission forms) and this should be considered as the core discipline. Additional keywords are used to define the other disciplines that may be involved.

Regarding the keywords, applicants can select from three to five as explained below:

1. Select the scientific panel (area of research) that best fits your proposal in the "General Information" section of Application Form Part A (e.g., CHE), which will be considered the core discipline.

2. Within the most relevant sub-area of research (e.g. C1-Inorganic Chemistry), select the first descriptor that best characterises the subject of the proposal (e.g., Catalytic materials).
3. The second descriptor that best characterises the subject of the proposal can be chosen from any of the eight (8) areas of research.
4. Third descriptor: it is mandatory to select at least one (1) additional descriptor which can be chosen from any of the eight (8) areas of research.
5. If needed, you may add further two (2) additional descriptors chosen freely from any of the eight (8) areas of research.

To help applicants select the most relevant panel for their proposal, a document providing a breakdown of each research area into several [keywords](#) is available on the [REA website](#).

All eligible proposals will be evaluated under one of the eight major areas of research (known as "scientific panels"): Chemistry (CHE); Social Sciences and Humanities (SOC); Economic Sciences (ECO); Information Science and Engineering (ENG); Environment and Geo-Sciences (ENV); Life Sciences (LIF); Mathematics (MAT), and Physics (PHY).

Experts will evaluate all proposals under a given panel. Each panel will establish a ranked list of proposals for funding.


Proposals must be submitted to only one of the eight scientific panels.

As indicated in the [MSCA part of the Horizon Europe Work Programme 2026-2027](#), the call budget will be distributed between the panels based on the proportion of eligible proposals received in each panel.

How to complete the Budget table (Part A section 3)

All participant organisations must be encoded only in the budget table as "**Partner**" (regardless of whether they are beneficiaries or associated partners), except the coordinator, which is registered as "**Coordinator**."

Participants from Member States/Associated Countries and from **low to middle-income countries** (automatically eligible for funding included in the List of Participating Countries in Horizon Europe) must encode the "number of seconded researchers" and "number of person months".

 **IMPORTANT:** Participants from **countries not in the List of Participating Countries in Horizon Europe** must encode zero (0) "number of seconded researchers" and zero (0) "number of person months"¹⁷. For exceptional funding requests see [section 4.2](#) above. The participants from EU MS/AC who wish to participate in the project with 0 budget (only by hosting staff) will be considered as Associated Partners.

Artificial Intelligence (A.I.)

AI definitions are available in the [Definition from the European Commission's High-Level Expert Group on Artificial Intelligence](#).

See also [Living guidelines on the responsible use of generative AI in research and recommendation for researchers, research organisations and funding organisations](#).

¹⁷ When entering 0 for "number of person months" for an Associated Partner in the budget table, you may see a warning: "Minimum secondment duration is 1 month." You can disregard this and continue with your application. This is not a blocking error.

An explanation for the use of *generative AI* ***in the preparation of the proposal*** should be included at the end of part B2 of the proposal.

 **List of publications**

In part A, neither the beneficiaries nor the associated partners need to fill in the list of up to five publications, relevant previous projects, or significant infrastructure. This information however will need to be described in the relevant sections of part B2.

Applicants are advised to consult the [FAQs](#) for additional information, examples and support.