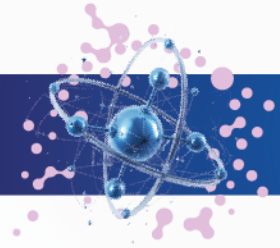




HORIZON EUROPE MARIE SKŁODOWSKA-CURIE ACTIONS 2026 CALLS CONFERENCE MSCA 30TH ANNIVERSARY IN TÜRKİYE



ONSITE EVENT

16 April 2026, Thursday – Boğaziçi University – Albert Long Hall – İSTANBUL

09:00 – 09:30

Registration

09:30 – 09:40

Opening Remarks:

Prof. Dr. Mehmet Naci İNCİ
Rector, Boğaziçi University

09:40 – 10:00

Türkiye in Horizon Europe

- An Overview of Horizon Europe
- Türkiye in Horizon Europe: Current Standing, Strengths, and Future Potential

MSCA National Contact Points for Türkiye - TÜBİTAK

10:00 – 11:00

**Marie Skłodowska-Curie Actions:
Postdoctoral Fellowships (PF) – A Strategic Funding Scheme for
Institutions and Postdoctoral Researchers**

- MSCA General Introduction and Policy Objectives
- Main Features of 2026 PF call
- Expected Impact and Benefits of the PF Call
- Eligibility Conditions and Project Budget
- Expectation From the Fellow and the Supervisor
- "To Do"s and "Not To Do"s while drafting the proposal

Audrey ARFI
Head of Sector, European Research Executive Agency

11:00 – 11:15

How to submit a MSCA Postdoctoral Fellowships via Participant Portal?

Şeyma SAYIMLAR OMER, MSCA National Contact Point for Türkiye, TÜBİTAK

11:15 – 11:30

Coffee Break

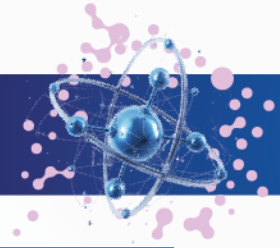
11:30 – 12:00

From Excellence to Funding: What Makes an MSCA-PF Proposal Successful

Asst. Prof. Koray MALCI
Department of Molecular Biology and Genetics, Boğaziçi University
MSCA Postdoctoral Fellowship Holder



HORIZON EUROPE MARIE SKŁODOWSKA-CURIE ACTIONS 2026 CALLS CONFERENCE MSCA 30TH ANNIVERSARY IN TÜRKİYE



An Evaluator's Perspective: How Successful Proposals Are Selected

12:00 – 12:30

Prof. Dr. Ali Emre PUSANE
Department of Electrical and Electronics Engineering, Boğaziçi University
MSCA – Postdoctoral Fellowships Expert Evaluator for European Commission

12:30 – 13:30

Lunch Break (at the venue)

MSCA Doctoral Networks (DN): Pathways for Early-Stage Researchers

13:30 – 14:10

Audrey ARFI
Head of Sector, European Research Executive Agency

Insights from an Expert Evaluator for MSCA – Doctoral Networks

14:10 – 14:35

Prof. Dr. Aslı BAYSAL
Department of Chemistry, Istanbul Technical University
MSCA – Doctoral Networks Expert Evaluator for European Commission

Discovering Further MSCA Opportunities for the Institutions with MSCA National Contact Points for Türkiye

14:35 – 15:00

- MSCA Staff Exchanges (SE)
- MSCA COFUND – Choose Europe – Türkiye's CoCirculation3 Project
- MSCA and CITIZENS

MSCA Support in Türkiye: Guidance and Resources

- **Leveraging Your National Contact Points: How They Can Guide You**
- **EURAXESS: Practical Support for Researchers and Institutions**
- **Marie Curie Alumni Association (MCAA)**

15:00 – 15:30

Tuğba ARSLAN KANTARCIOĞLU, PhD
Burcu Bahar GÖĞÜŞ DOĞAN, PhD
Şeyma SAYIMLAR OMER
MSCA National Contact Points/National Experts for Türkiye
EURAXESS National Coordinators

15:30 – 16:00

Closing Remarks (with Questions and Answers)

Location: Boğaziçi University Albert Long Hall – Bebek – BÜ Güney Kampüsü No:20, Beşiktaş – İstanbul